

State and Local Government

Delivering Expert Solutions
to State and Local Clients

Key Products:

- LiDAR Acquisition & Processing
- LiDAR Contours
- LiDAR DEM
- LiDARgrammetry
- Aerial Photography (Color, B/W)
- Airborne GPS and IMU
- Geodetic / GPS Surveying
- Analytical Aerial Triangulation
- Base Mapping
- Data Conversion
- Digital Image Scanning
- Digital Orthophotography
- Digital Terrain Elevation (DEMs)
- Digital Terrain Models (DTMs)
- Planimetric Mapping
- Topographic Mapping
- GIS Services
- Land-Use Land Cover Mapping
- Color Infrared Aerial Photos
- Photo Lab Services
- Volumetric Mapping / Analysis

Key Facts:

- OPTECH LiDAR sensors and Leica RC-30 camera systems with IMU
- Project Managers with over 20 years of experience
- Two Certified Photogrammetrists on staff
- Two Certified GIS Professionals
- In-house photo lab
- ESRI Authorized Business Partner
- Bentley Developer Network Team Member



Aeroquest Optimal

Aeroquest Optimal (OPTIMAL) is a full-service geospatial company with a commitment to quality and customer service.

With decades of professional service to government and private industry in North America, our experienced team of Certified Photogrammetrists, Professional Land Surveyors, Certified GIS Professionals, Mapping Technicians and Flight crew stand ready to provide timely and accurate geographic information and support to our state and local government customers.



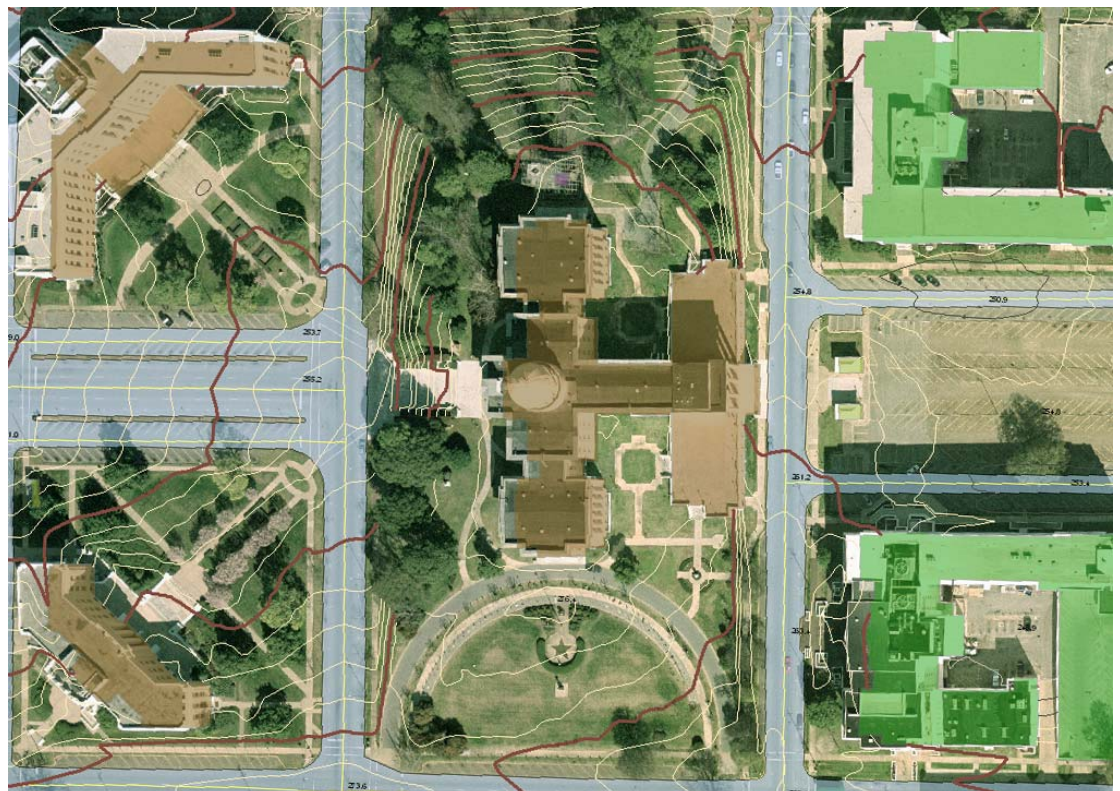
Digital Orthophoto with GIS Layers

Reference Quote from Government Client

*"Your performance on the projects has been **exemplary** and is reflective of your firm's knowledge in **photogrammetry** and **mapping**. Your firm is to be commended for your professionalism and the fine performance exhibited in the execution of this contract."*

OPTIMAL's Key Benefits

OPTIMAL is dedicated to customer satisfaction and technical excellence. OPTIMAL has integrated highly skilled and experienced professionals with advanced digital processes and equipment to form one of the most sophisticated LiDAR, Digital Photogrammetric Mapping and Surveying solutions available in North America and other global regions.



Color Orthophoto with Topo and Plan Data - Capitol Grounds, Montgomery, Alabama

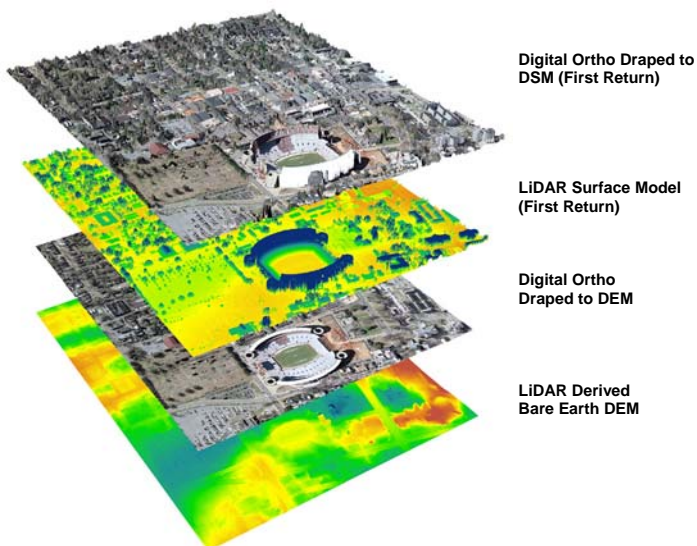
State and Local Government Support and Services

Project Management

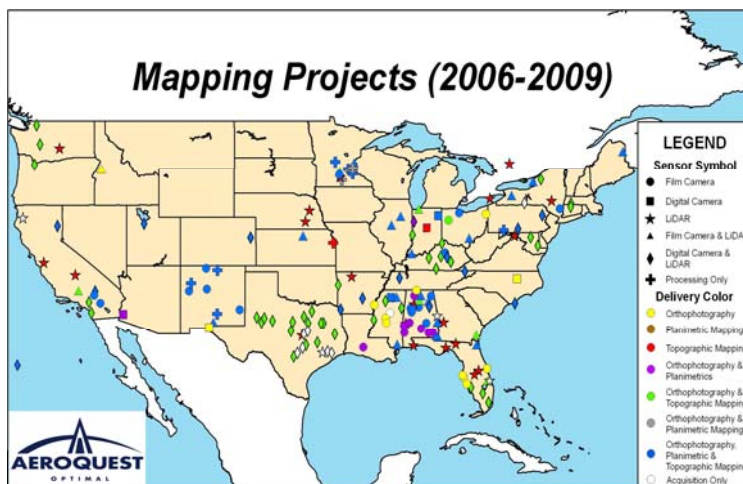
Our staff of professional Project Managers serve as the point of contact for all work and have a history of successfully delivering projects to numerous county, state, and federal customers including numerous Departments of Transportation. Their priority is that you receive the highest quality services available. OPTIMAL is dedicated to providing customer satisfaction, technical excellence, and quality in all we do. OPTIMAL always strives to compose the best team possible to respond to your Photogrammetric Mapping, Surveying, LiDAR and other project needs.

LiDARgrammetry

OPTIMAL has earned a reputation of providing precision LiDAR (light detection and ranging) services and products in a timely fashion to a broad spectrum of customers. LiDARgrammetry is the process of creating synthetic stereo pairs from LiDAR intensity data and using long-standing, accepted photogrammetric techniques to delineate planimetric shapes and terrain features. Because LiDARgrammetry does not require the use of photography for breakline or planimetric feature collection, data can be collected at night and in marginal weather conditions. OPTIMAL has successfully implemented this technology in its current workflow and has successfully delivered hydro-enforced Digital Terrain Models and planimetric mapping at a reduced cost and timeframe to our customers.



Imagery Stack (Digital Ortho Draped over LiDAR)



Photogrammetric Services

OPTIMAL has decades of continuous service to a broad range of customers and a history of being early adopters of new technologies such as softcopy photogrammetry, airborne GPS, IMU and LiDAR. OPTIMAL offers end-to-end solutions for a range of photogrammetric service needs. We offer aerial acquisition using in-house aircraft and remote-sensing equipment, as well as a full range of topographic surveying services. With seventeen (17) first-order softcopy photogrammetric workstations, OPTIMAL has one of the largest internal capacities found among North American photogrammetry providers. All projects are planned under the supervision of our ASPRS Certified Photogrammetrists and Professional Land Surveyors, ensuring compliance with professional standards of technical design, accuracy and reporting. Using database-driven proprietary compilation software in a Bentley MicroStation® environment, data is collected and organized to suit the specific output needs of the project. OPTIMAL routinely outputs data in a wide range of formats including: Bentley MicroStation®, GEOPAK®, AutoCAD®, ARC/INFO and other ESRI products.

In-House Photographic Lab

OPTIMAL's in-house photographic lab has been in operation for 49 years. We have processed tens of thousands of rolls of aerial film for a broad range of clientele including numerous DOT, cities and counties. Additional services offered include high-resolution scanning services, enlargements, historical photo processing and archival.

For more information:

Contact: Mr. Mark Brooks at (256)882-7788 or mark.brooks@optimalgeo.com



www.optimalgeo.com

Aeroquest Optimal

4975 Bradford Drive Ste 100, Huntsville, AL 35805
Phone: 256-882-7788 | Fax: 256-882-7774 | Toll Free: 800-723-0555